



Humana People to People

The International Humana People to People Movement



Annual Report 2010

Greetings from the Chairperson



In 1978, when Humana People to People's members started their first projects, 1.9 billion people were living on less than \$1.25 USD a day. The injustices and consequent need for taking action on the basis of human solidarity was clear to see.

Today, 1.4 billion people still live on less than \$1.25 USD a day. Though the number has declined slightly, the harsh realities of living poor are no less severe.

After 33 years, you might ask if it is still worthwhile to continue fighting for development and to do it shoulder to shoulder with the poor. We say, yes, absolutely. There is still much work to be done.

The strength and capacity of people taking matters into their own hands is a force to be reckoned with. Like so many of our partners in development all over the world, we see great value in providing training to spread knowledge and ideas, finding ways to give people access to capital and in general working to do what must be done.

One example among the many is the challenge of the small-scale farmer who must grow more and better food, sell more and become an even greater producer of surplus on all levels. In 2010, Humana People to People projects organized 75 thousand farmers, men and women, mobilizing them to achieve these goals. We wish for much more support for these and many more hard working farmers. Today 500 million small-scale farmers feed 2 billion people. They deserve a helping hand.

Humana People to People has continued to operate at the same level as in previous years and within all the same sectors: Agriculture and Rural Development, Training, The Big Epidemics, and Community Development. This in itself is no small achievement in 2010.

We send our congratulations to the millions of people who are active every day in a Humana People to People project somewhere in the world, and on their behalf, a big thank you to our Partners in Development who continue their support, even in times of financial difficulties.

Maria Darsbo, Chairperson

The Federation for Associations connected to the International HUMANA PEOPLE TO PEOPLE Movement

About Humana People to People

Humana People to People is an international network of not-for-profit organisations engaged in international solidarity, cooperation and development in Europe, Africa, Asia and the Americas. Humana People to People grew out of the anti-apartheid movement in Europe and Southern Africa in the 1970s and has continued its development work rooted in a commitment to fight alongside the poor in a collective process that supports people to make changes, improve their lives and solve their problems. We see overcoming poverty and ensuring human development as a holistic process involving many people: children, parents, teachers, farmers, health workers, passionate community members, local leaders, national governments and international partners. We believe that poverty can be overcome through coordinated, community-wide approaches, which combine education, adult literacy, improved livelihoods, increased production, health and sanitation, the empowerment of women and environmental protection. Humana People to People organisations work as part of civil society within communities and strengthen their capacities for cooperation, for individual and collective action.

Thirty-two independent national development aid organisations are members of The Federation for Associations connected to the International Humana People to People Movement. The Federation supports its member organisations with services such as program development, staff training and financial planning. The Federation is registered in Switzerland, and has its international headquarters in Shamva, Zimbabwe. Humana People to People organisations operate in 43 countries (as shown on the adjacent map). Over 360 development projects reach 12 million people, engage 200,000 community volunteers and provide employment for 9,000 people.

Areas we work with



Agriculture and Rural Development

Organizing and training of small scale farmers in Farmers' Clubs to improve livelihood, increase production and expand supplies to the market.



Training

Training of teachers for rural primary schools. Vocational training of the youth. Schools for orphans and vulnerable children. Higher education for fighting with the poor.



Environment and Recycling of Clothes

Environment protection, job creation and development through second hand clothes and shoes collection, processing and trade.



The Big Epidemics

Stop AIDS with Total Control of the Epidemic and with HOPE Humana People to People. Fighting other major epidemics, such as malaria and TB.

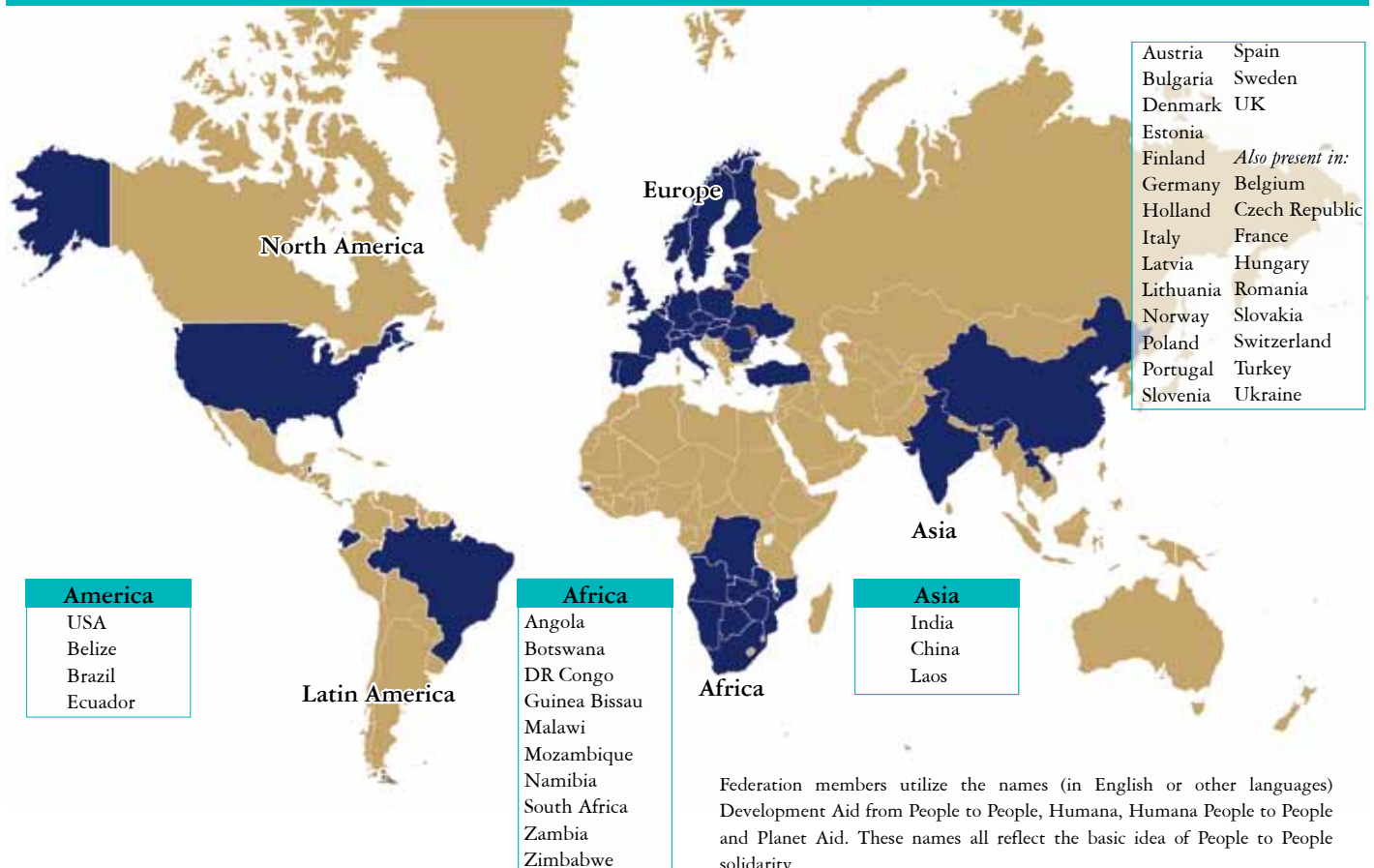


Community Development

Community development is about fighting shoulder to shoulder with the poor. Child Aid and Community Development Projects do this with actions organized according to 10 lines of activities.

Front picture: A child measures her strength and nutrition status after participation in nutrition program

Where we work



Agriculture and Rural Development

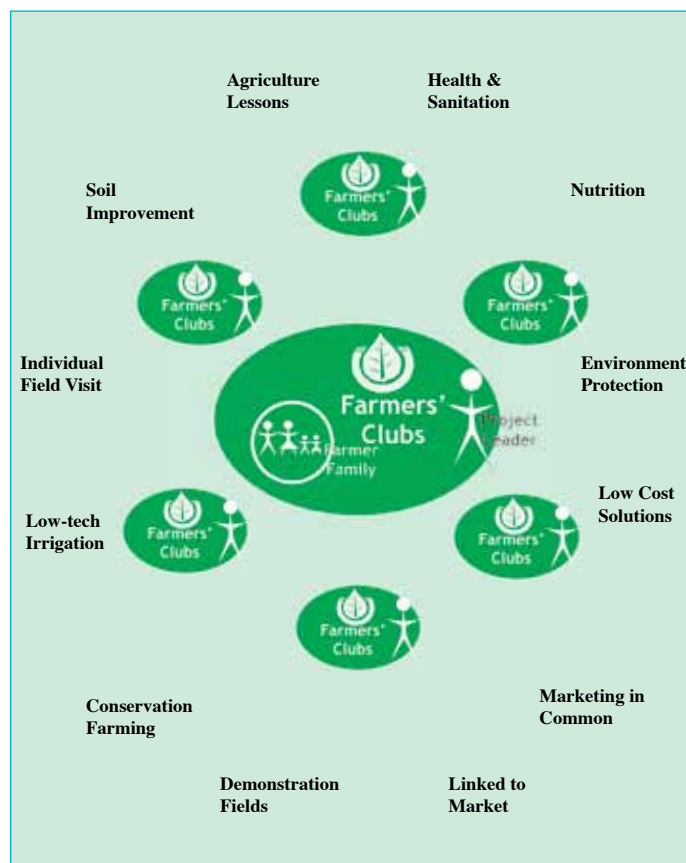
Farmers' Clubs

Today 500 million small-scale farmers in Africa, Asia, and Latin America produce food for 2 billion people. Most of these farmers live on less than \$2 USD per day. They are part of solving the global problem of securing enough food for all.

The small farmers' quest to farm effectively, to learn more, to provide food enough for their families, and to earn an income by selling products on the market is the driving force of Humana People to People's Farmers' Clubs program.

The clubs expand the farmers' knowledge and experience, and become a forum for sharing results and seeking advice to overcome local production challenges, while functioning as a source of inspiration and support for launching additional ventures. Farmers learn the advantages of working together in negotiating prices for inputs, and as production increases, they also work together to bring their surplus products to market.

Farmers' Clubs train small-scale farmers to use sustainable farming methods. Participants learn the principles of conservation farming, organic composting and water management to increase their yield. Garden farming is always included and crop diversification is promoted as a main strategy, which is tailored to fit local production conditions and culture. Tried and tested low-tech and low-cost solutions are commonly used to increase production and effectively process food after harvest. The comprehensive training program is rounded out with lessons in budgeting and planning along with techniques to improve basic nutrition and health.



Farmers' Clubs Facts

In 2010, Humana People to People members trained and organized 75 thousand farmers, men and women alike, in Farmers' Clubs in China, Angola, Guinea Bissau, Malawi, Mozambique, Zambia and Zimbabwe. Each Farmers' Club has 250 farmers, who are further organized in smaller units of 25-50 farmers for easy cooperation.

The Farmers' Clubs program is implemented over a span of several years, providing the time needed to facilitate change in the mainly rain-fed production of the small farmer. Six years are better than five, and three years is the minimum.

An example of the success of Farmers' Clubs was observed in Farmers' Clubs in Malawi, where 12,000 participants increased the average value of their production from \$520 USD to \$1,672 USD over a period of three years. They grew a greater variety of vegetables to ensure adequate nutrition for their families and they introduced cash crops that helped them contribute to the overall economy of the country.



The farmers work together in smaller and bigger groups with common interests in farming and business.



The Project Leader visits the farmer's field, discusses issues and advises the farmer.



The farmer establishes or increases vegetable production to improve nutrition and earn money from sales.



Animal husbandry is part of a diversified production providing protein for the diet and possibilities for cash income.



Low-cost farming technology is introduced for utilization of local water resources.



Adding value to the products through processing and packaging.

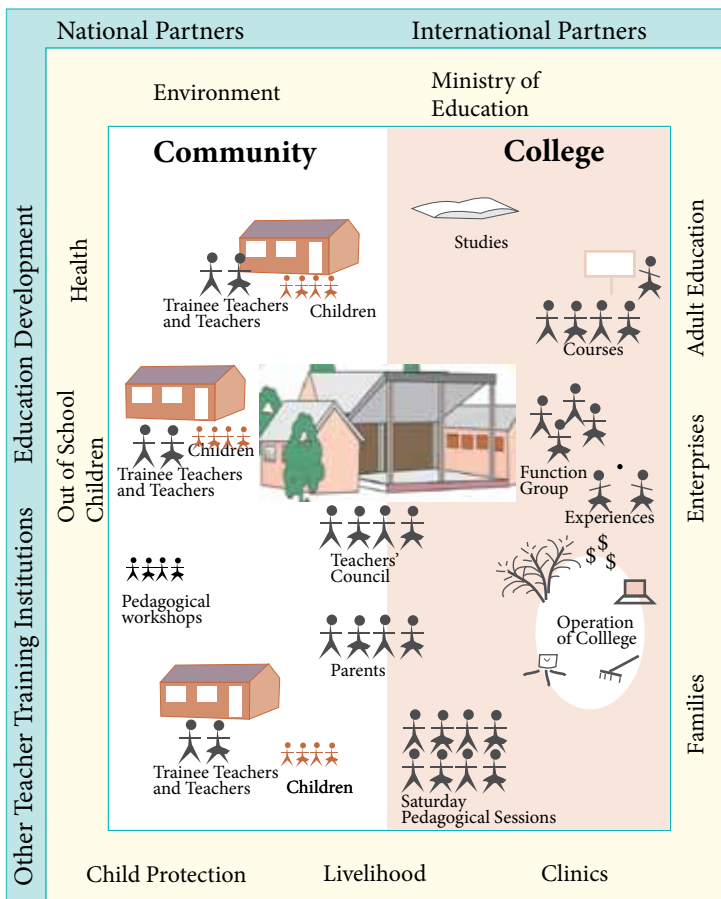
Training

Training of teachers for rural primary schools

Humana People to People trains teachers for the rural areas and the poorest parts of cities, where the lack of qualified teachers is greatest. With training colleges located in rural areas of southern Africa, Humana People to People let the life in the wider community become an important part of the training process. The teachers learn to play a key role in training the whole community, improving the health situation, growing food together with children and parents using their capacity to fight for development along with the people in the communities.

The training focuses on building theoretical and practical knowledge and developing the skills and abilities needed for effective teaching. From the very beginning, trainees combine their study of subject areas with teaching the subjects in the schools. They also develop methods that fit the individual classroom situation, which often has many children and few books and little equipment. The program aims at having trainees transform themselves into teachers, who can contribute to the growth of the new generation in the rural areas who possess the requisite skills to learn and to continue developing themselves and their communities.

The program at the teacher training colleges is based on an individual and collective approach. To become effective teachers, the trainees must individually be motivated to learn and excel. The training is at the same time rooted in teamwork and responsibility to the group. One of the elements that instills this is the team approach to managing and running the teacher training colleges, which the trainees do together with their teachers.



Teacher training by 2010.

Humana People to People members train primary school teachers in Angola, Malawi, Mozambique and India. The training is done in close partnership with national ministries of education, within the context of national education plans and including the full content of the national curriculum for teacher training as well as specific subjects you only find in the Humana People to People teacher training. The trained teachers are employed in and strengthen the education sector of their respective countries.

ADPP Mozambique operates 11 teacher training colleges. ADPP also operates One World University, where instructors are trained for the teacher-training colleges. 9,284 teachers have been trained since 1993.

ADPP Angola runs 12 teacher training colleges and has trained 4,120 teachers since 1994.

DAPP Malawi runs 3 teacher training colleges and has trained 423 teachers since 2006.

Humana People to People India started the teacher training program in 2009 and the first 552 teachers are currently being trained at 3 teacher training colleges.



The Federation sees the teacher as a part of and a contributor to the progressive development of her country.



The teacher training includes a thorough practice in primary schools to give the future teachers first hand experience.



Saturday Pedagogical Sessions let students share experiences with primary school teachers, parents and others with interest in education.



The boarding life is shared by the whole college. It comprises the students, the teachers and the headmaster and creates unity.



With support from the teacher, children move forward and learn the reading and numeracy skills that are basic for continued learning.



The teacher training colleges are centers for a range of activities for children, youth and for the local community.

OWU



One World University was created by Humana People to People to provide needed advanced training, offering students a choice of two degree programs: education and a community development-focused program called “Fighting with the Poor.” The graduates of the education program are qualified to serve as teacher-training instructors at Humana People to People colleges and other institutions in Africa. The Humana People to People institutions embrace the ambitions of modernity and are dedicated to spreading knowledge and a contemporary understanding of the world to future generations of primary school students. To date, One World University has graduated 296 Bachelors of Education.

The degree “Fighting with the Poor” is new and groundbreaking in that it focuses directly on training students in the theory and practice of transformational processes in society, and emphasizes the responsibility of educated people to bring about justice and equality. “Fighting with the Poor” provides students with a deeper understanding of the poor and the basis of their plight, while raising the personal willingness and ability and readiness of students to fight the good fight side by side with the poor.



Vocational Training



The Humana People to People Vocational Training Schools provide young people with training and support to start a career, and thus expand the skilled labor force and create economic development. Members currently run 11 vocational schools in Angola, Guinea Bissau, Malawi, Mozambique, Namibia and Zimbabwe. They provide vocational skills training to approximately 1,600 students per year.

The training provided at the schools focuses on helping youths develop a broad range of skills, enabling them to become entrepreneurs or obtain employment. In addition to the main programs, many other training courses are offered of one week to four month to provide out-of-school youth, women and other community members with locally marketable skills that will lead to a better livelihood.



Schools for Children



Humana People to People member organizations currently operate 18 primary and secondary schools in Angola, Mozambique, Namibia, Zambia, Zimbabwe and India. These schools provide education for orphans and other children whose situation has caused them to stop attending school and, in many cases, live on the street. In Africa, Humana People to People has developed a specific model for these vulnerable children called Children's Towns. These are boarding schools with a full-time program, where children live and receive lessons in academic and practical life skills. The schools strive for the students to re-unite with their extended families and enter the mainstream school system after some years of rehabilitation.

In India, Humana People to People has established a similar model called Academy for Working Children. These schools are designed with a flexible program to meet the needs of the poorest slum children. The schools work with parents to ensure that the children continue their schooling after leaving the Academy. All schools have extensive cooperation with the ministries of social welfare and education in their respective countries to ensure the children can progress despite a difficult start in life.



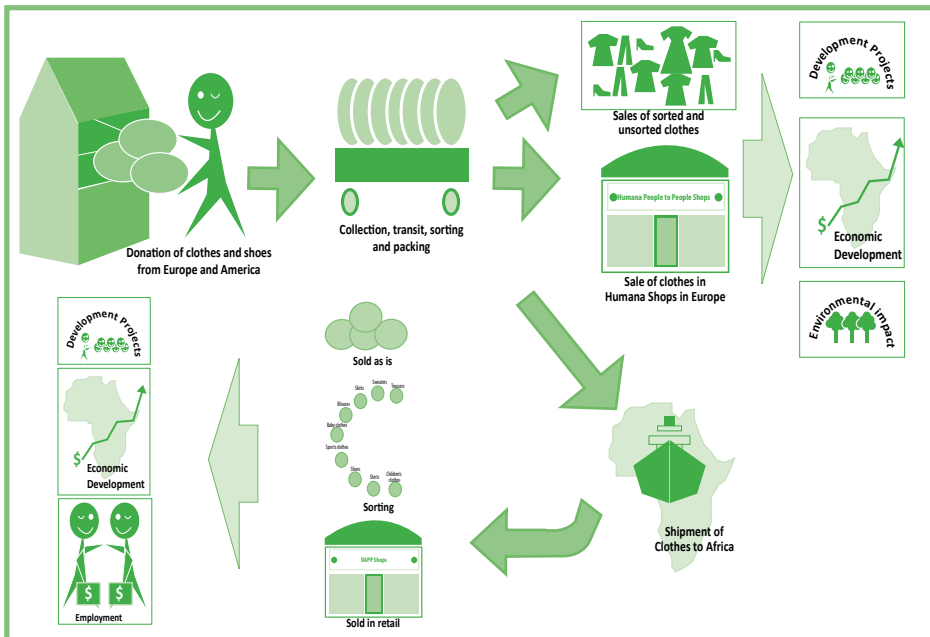
Environment and Recycling of Clothes

Adding value to second hand clothes and protecting the environment

Humana People to People has established a second hand clothes collection system in Europe and the United States. It is an important generator of economic and social development and helps protect the environment by saving valuable resources and reducing unnecessary waste.

The collection, sorting, and sale of secondhand clothes creates many jobs in Europe, the United States and in developing countries. In Africa, for example, clothes are washed, repaired, transported and traded at local markets, all of which generates economic activity.

The surplus funds obtained from the sale of the used clothes are used for development projects run by Humana People to People members. The environment is protected, as the clothes are recirculated instead of disposed of, and thus saves resources that would have been used for the production of new clothes. Reuse of clothes minimizes the emission of greenhouse gasses, and spares the landfills from millions of tons of clothes.



Adding value to used clothes starts when a person in Europe or North America decides to donate used clothing in one of the clothes collection bins. More than 10 million people in Europe and North America do so every year.

In Europe, the clothes typically go to a sorting center, where pieces of clothes suitable for sales locally are picked out, and the rest is sorted for shipment to Africa, for sales commercially or for the recycling industry. In Africa, the clothes are again processed. They can be sold in bales of 400 kg to bigger traders, or packed in smaller bales of 100, 40 or 15 kg and sold to traders on the local markets or in retail shops. The net proceeds provide funding for development.



Humana People to People members in Angola, DR Congo, Guinea Bissau, Malawi, Mozambique, and Zambia receive clothes and sort it into many different categories and re-pack it in smaller bales for sale or supply to shops making good clothes available at affordable prices.



From the wholesale shops, the customers buy the type of product they can best sell and they often have family members or employees wash, iron, repair and remodel the clothes and sell them in the market places. A surplus is generated and the traders create a livelihood.

People to People Information

Development Education

Humana People to People members are deeply involved in spreading information about development issues and fostering an understanding of the causes and effects of underdevelopment and an awareness of the impact that individuals can have through personal involvement and actions. In Europe and North America the focus is put on climate change, the UN Millennium Development Goals (MDG), recycling and mobilizing support for development work.

Some specific examples are:

Humana Fundación Pueblo para Pueblo in Spain has put focus on the MDG through puppet shows. Children, their parents, and teachers made puppets of recycled materials and created puppet shows about how people can be involved in reaching the MDG.

Also in Spain, students have been involved in actions with climate change and recycling as the main topics under the headline 'You Make the World.'

Humana Estonia was engaged in the project 'Attending Solidarity Schools', which involved teachers in exploring effective methods for teaching how to create development.

Humana Latvia is part of a project that works in 5 countries to strengthen organizations to raise awareness about intercultural issues and sustainable development.

Planet Aid in the United States operates a school program, where children are engaged in the collection of clothes and obtain knowledge on how to protect the environment.

Humana Day 2010

People to people relations and actions are integral parts of the Humana People to People concept. This has always included the spread of information and awareness about the world, about development and particularly about the challenges faced in the countries where Humana People to People is working.

Humana Day is a new initiative started by members in Europe to engage many people in the issues of development in the world. It is at the same time a celebration of the results that people can achieve to improve conditions for their fellow human beings.

In 13 countries across Europe, the European members of the Federation celebrated the first Humana Day on September 23rd, 2010 under the headline "Education for All."

Caravans of small busses travelled around and set up information camps in many towns and cities. The exhibitions and actions in the streets engaged people in debate about the importance of education. They also informed observers of what Humana People to People accomplishes by training teachers and operating vocational schools and children's schools.

Many also learned about the projects when visiting Humana People to People's used clothing shops across Europe, while others participated in school programs. Open House arrangements were also held in Denmark, Norway, Sweden, Finland, United Kingdom, Spain, Portugal, Italy, Austria, and Germany focusing on knowledge on the environmental benefits and development value of clothes collection.



The Big Epidemics

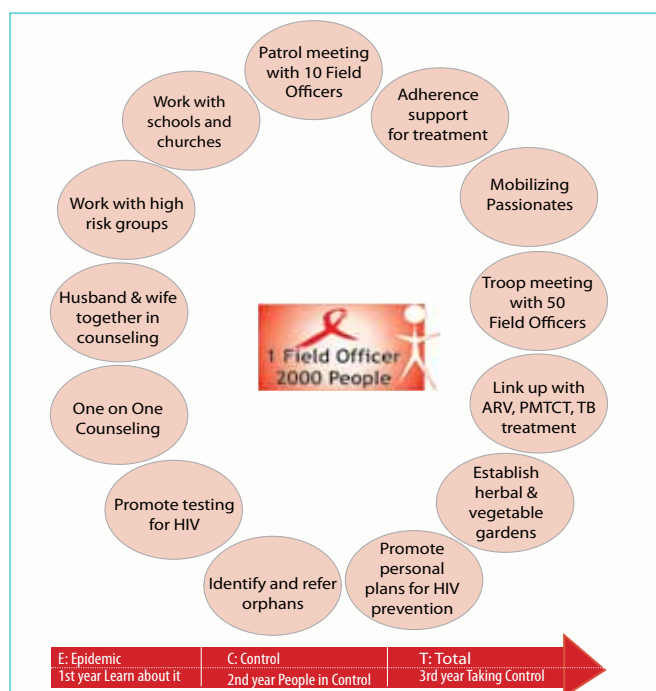
Total Control of the Epidemic:

TCE – Total Control of the Epidemic is a community mobilization program focused on preventing HIV transmission. The foundation of TCE is that only people can liberate themselves from the HIV epidemic. The program raises awareness about HIV, mobilizes people to change behaviour and utilize health services such as HIV testing, treatment for HIV (anti-retroviral treatment, ART), treatment of sexually transmitted diseases and opportunistic infections, participation in maternal and child health programs and TB treatment.

The basis of the TCE program is dialogue on HIV/AIDS between a TCE Field Officer and all individuals in his Field of 2,000 people. TCE is systematically covering all people in a TCE Area. This is a geographic unit of 100,000 people. Fifty TCE Field Officers are employed in a TCE Area, with each assisting 2,000 people. Every single person in the area is mobilized to take control of HIV in his/her own life. The Field Officer assists individuals to draft a personal HIV risk reduction plan and supports the people in changing sexual behaviors and lifestyle.

The Passion for People Movement is a civil society structure which consolidates the 3 year TCE campaign. Many individuals choose to join the Field Officer as volunteers in the fight. They are called Passionates. The Passion for People Movement in TCE organizes the Passionates to respond to the plight of orphans, create Positive Living Clubs, give Home Based Care, mobilize for and organize mobile testing, establish income generation clubs and condom distribution points and much more.

The TCE campaign strives to compliment the efforts of a respective country's Ministry of Health to achieve the national plans for basic health. One way is by mobilizing people to access health services at clinics. The TCE campaign is reaching people who live far from the clinics and people who do not use government clinics for fear of discrimination or lack of transport and it provides a bridge between clinics and people through the TCE Field Officer's close relationship with the community members and possibility to support them to use the health services and follow up on adherence to treatments.



TCE in 2010

TCE has since the year 2000 reached more than 11 million people, mainly in southern Africa but also in India and China.

In 2010, 40 TCE areas were in operation, reaching 4 million people and mobilizing them to get control with HIV/AIDS in their own lives. Field Officers assisted 1.4 million people to make individual HIV risk reduction plan.

In 2010 alone, 340,000 HIV tests were performed. In Zambia, Malawi and Mozambique, 116,000 of the HIV tests were done in the field (“home-based testing”) by trained TCE Field Offices. The ministries of health in each country have provided the needed training for the Field Offices and overall supervision of the quality.

More than 500,000 Passionates took an active part in fighting for prevention and care.



TCE Field Officers' capacity to link people to local health services has secured treatment and benefits from health services for many.



The Field Officers' systematic work and commitment results in strong connections with people that convince them to make behaviour changes.



TCE Field Officers build capacity in individuals and groups to change behavior and use health services.



The Passionates take over actions in the community and are important in maintaining momentum after completion of the TCE campaign.



TCE mobilizes and empowers people in the fight against HIV, as people who are knowledgeable and mobilized can get in control of any epidemic.



Home-based counseling and testing is a viable way for people to learn their HIV status and then act accordingly with it.

HOPE



The idea of the HOPE Humana projects is to give people hope and the ability to face HIV/AIDS. It is a People to People strategy based on people coming together and acting to realize the hope for life. The HOPE projects work through actions that prevent infections, lead to a healthier life with HIV and create many alliances and structures for people to support each other to deal with the consequences of the HIV pandemic.

The HOPE project has a center for its activities, but works with people in their communities to ensure that it is easy for people to meet, support each other and follow up on PMTCT (Prevention of Mother to Child Transmission), TB treatment, ARV (Anti Retroviral) treatment and others.

In 2010 HOPE has reached out to 760.000 people through 28 projects in 8 countries. The strategy of HOPE is expressed through three main elements: Health Services, Opinion Forming Activities and Outreach Activities. In all of the elements volunteer HOPE activists take a lead. They are trained in community mobilization skills and HIV/AIDS prevention, care and support. Testing services with follow-up are also provided, and referrals are made as needed to support groups, to treatment centers and to other health services.

HOPE cooperates with the government health facilities and local, national and international partners engaged in the same struggle to overcome and prevent the HIV epidemic and to deliver the needed services to people.

Fighting Malaria

Malaria-carrying mosquitoes cause more than 800.000 deaths a year, and 85% are children under the age of 5 years. This can be avoided by concerted efforts and actions in the communities where malaria is endemic. Malaria prevention, case detection and treatment is integrated as part of Humana People to People projects in areas where people suffer from malaria infections. Project staff provides information, distributes treated mosquito nets, trains community and school volunteers and cooperates with the clinics.

In Yunnan province, China, the Total Malaria Control program is implemented on the border to Myanmar where many migrant workers are exposed to malaria risk. This community-based program will reach 3 million people over 5 years. In 2010 alone, 610,000 individuals have been reached through campaigns and training of community volunteers.

In Zaire province, Angola a school-based malaria control program reaches 100,000 people. Here 12,000 school children from 200 schools across the province are organized into Malaria Control Patrols (MCPs). They learn how to prevent malaria, to recognize the symptoms, seek early treatment, and they participate in distribution of treated nets.



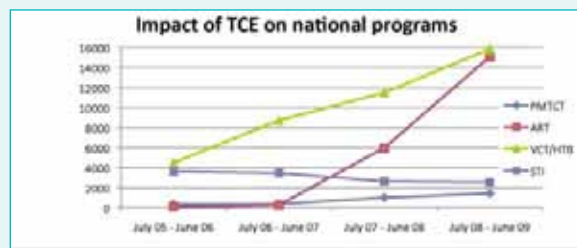
TCE creates demand for health services

Because of the systematic approach of TCE, utilization of health services are greatly improved. This occurs as Field Officers reach all people in a TCE Area with individual counseling and refer them to the health system and follow up on treatment adherence.

The illustration is from 2 TCE Areas with 200,000 people in southern Malawi. They show the increase in the number of people seeking health services after the implementation of TCE. The illustrations are based on clinic statistics.

Testing for HIV (Voluntary Counseling and Testing - VCT) is an important component in HIV/AIDS interventions as it constitutes an entry point to prevention and treatment services. The number of people tested at the clinics increased year by year and as Home-Based Testing (HBT) was also introduced, more people were tested through HBT. People testing positive at the clinics and in the HBT increased the demand for ART and for treatment to prevent transmission of HIV during pregnancy and delivery (PMTCT).

Simultaneously with the increased demand for HIV services, the demand for treatment for Sexually Transmitted Infections (STI) decreased, indicating an increased use of condoms or fewer sexual partners.



Fighting Tuberculosis

Two billion people in the world live with the bacteria causing tuberculosis (TB) but only one in ten get sick because the infection is activated. Those who do get sick are people with a reduced immune defense system, making TB a disease of the poor and an additional risk for people who are HIV positive. One in four AIDS death is related to TB even though TB is preventable and curable.

Humana People to People fights TB in its health projects and in specific TB programs. People are reached with information on how to identify TB symptoms and on where to go for testing and treatment. People who are found to have TB are supported during their treatment to avoid defaults.

For example, in China, the Humana People to People TB Control Project works in two districts of Yunnan Province, covering a migrant population of 520,000 people.

Humana People to People South Africa has included the fight against TB in its TCE activities and reached 2 million people as part of their one-on-one HIV discussions with people.

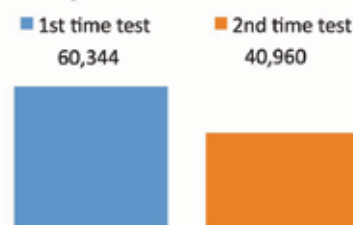
DAPP in Zambia is working with TB Treatment Supporters in TCE, Child Aid and HOPE projects. The TB Treatment Supporters are trained and work as volunteers in close connection with medical staff at local health posts.

Home Based Testing

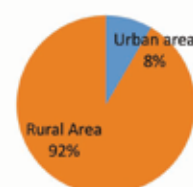
Home Based Testing provides access to testing to people at their home, in surroundings where they feel confident and the counseling and testing can be done in confidentiality. Humana People to People has integrated Home Based Testing in the TCE program in Zambia, Mozambique and Malawi with TCE Field Officers trained to provide the testing.

In the TCE area in Mazabuka district in Zambia covering 100,000 people the Home Based Testing program saw 60,344 people testing first time and 40,960 people returning for a test to confirm their result after the window period. The 50 TCE Field Officers were trained in counseling and prick testing by the Ministry of Health and follow the official standards. 59% of participants in the Home Based Testing were male and 41% were female, indicating that men can be reached in an environment where they are confident. 92% of the tests were done among the rural population that otherwise have difficulties in accessing testing facilities.

People tested in HBT



Tested from urban and rural areas



Community development

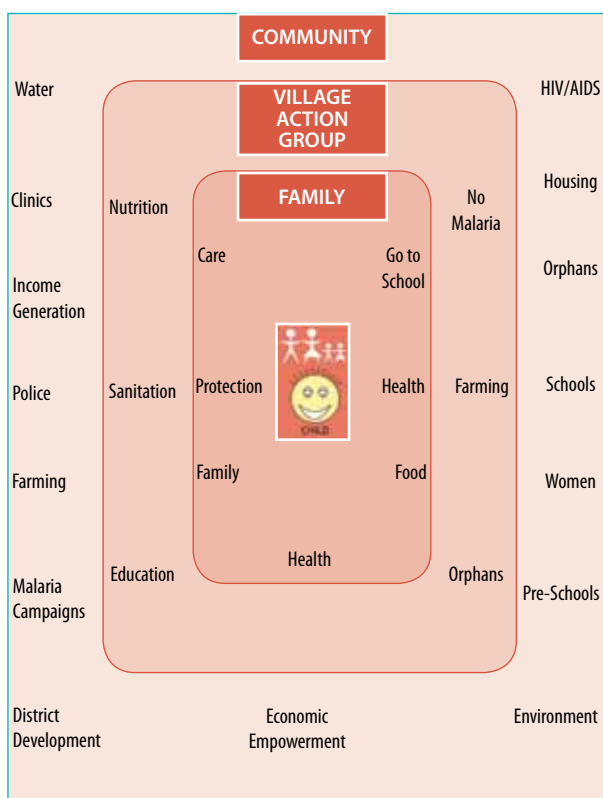
Child Aid and Community development

In the 20th year of the Convention on the Rights of the Child, Child Aid is still one of the many contributors to making those rights come true. Child Aid is what it says: Aid to the child, to grow, learn and live in safe and healthy conditions. All parents wish to create such conditions for their children, but many do not manage on their own. Child Aid is a comprehensive community development program organizing and activating local communities to build their capacity to get out of their situation as poor and give children the best conditions for development.

Broadly based, Child Aid builds the capacity in the families and their communities in an all-inclusive program, recognizing that in order to nurture children successfully, the entire community must be strengthened. Families are brought together to address health and sanitation, income generation, education, district development, environmental awareness, and participation of children. In Child Aid the whole community organizes itself around getting the needed knowledge and taking practical actions to improve conditions where needed. Here the primary schools and health facilities in the operation areas are important cooperation partners - children, teachers, health workers and parents alike.

The program works in close co-operation with the government structures which deliver services and other civil society organizations. The networking builds on mutual benefit to reach the UN Millennium Development Goals.

The concept of Child Aid leaves space for locally determined additions to the main program, and the concept operates with using various structures in the organization of the children and their families, for example by forming Village Action Groups of 20-30 families with a coordinator, who is a volunteer from the local community. The Village Action Group works together in the day-to-day implementation of their activities. Community Committees work with specific topics, like Water and Sanitation, Agriculture or Orphan and Vulnerable Children. They are formed to be a part of the structured response to the fight of the poor.



Community Development in 2010

The Child Aid and Community Development Projects is the most widespread Humana People to People concept with 65 projects in 15 countries, Angola, Botswana, DRC, Guinea Bissau, Malawi, Mozambique, Namibia, South Africa, Zambia, and Zimbabwe in Africa, China and India in Asia and Belize, Brazil and Ecuador in Latin America. Child Aid and Community Development involved more than 1.8 million people.

Focus on Child Aid Results in Zambia

An assessment carried out in Child Aid in Zambia shows clearly the benefits of the comprehensive and structured approach. Some of the results achieved among 60.000 families over a 4 year period are:

- The project has been working with 1,248 Village Action Groups.
- The number of families living above the poverty line increased from 1% to 15.5%.
- Child malnutrition reduced by 34.7%
- Food security has increased by 24.4%.
- 78% of women take part in decision making and 38% reported improvement in household sharing of work load.
- 12% reduction in the incidence of diarrheal cases.
- Households with access to safe drinking water within a distance of 500 meter increased from 34% to 57%.
- Households with a standard latrine increased from 10% to 59%.



Community Development builds on everyone's imagination, abilities and initiatives and teaming up.



Children learn that they can act to make a difference and that it matters with their actions in the community.



The projects are placed in the middle of the community and the staff and volunteers fight shoulder to shoulder with the poor.



Many programs are based at the schools and involve the children and teachers to improve health and education.



Entrepreneurship and production are central elements in the community development.



Campaigns and common actions make people go together to lift heavier tasks, move bigger issues and experience changes created commonly.

In Partnership with Many

Partnership in Development

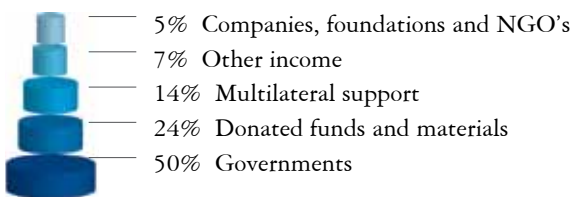
Humana People to People's 34 years experience of working directly with communities form a solid basis for collaboration with funding partners with an interest to contribute to the fight with the poor. Humana People to People engages with many partners in development to promote progress within communities in the areas of production, health, education, environment protection, economic livelihoods, child welfare, and more tailor made interventions.

Humana People to People sees partnerships as a great opportunity. For the people as they get companions in the fight for development. For the funding partners because in Humana People to People members they will have a partner, who is part of the civil society and works to strengthen other players in the civil society in the form of community organizations, communities, families and individuals. Humana People to People trusts the people, and enjoys the trust of the people, and act as part of the community where the development projects take place at the same time as engaging with local, provincial and national authorities about problem identification and strategies for solutions. For the involved governments, because important development tasks can be solved and contribute to the desired community transformation relevant to attain the UN Millennium Development Goals, National Government development strategies and International resolutions.

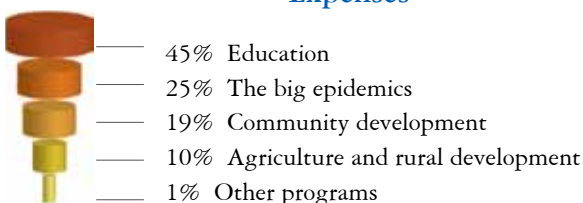
Partnership in Development is a real PEOPLE TO PEOPLE effort. Development is created by people with the understanding that their contribution is crucial for progress in our world. We thank all the people who are active in the projects and all the people who have contributed their time, clothes or funding for more activities and surplus to be created.

Financial Overview for The Humana People to People Movement

Sources of funding



Expenses



The members of the Federation* spent in total xx million US\$ for Humana People to People activities in Africa, Asia and Latin America in 2010. This is an increase of xx million US\$ over 2009, which has enabled the members to expand their activities and involve even more people in the development projects.

Humana People to People wishes to thank all partners and individuals who have contributed to the development programs and made it possible for the staff and the more than 12 million people to be active and impact their own, their families as well as their nation's development.

The program activities fall into the 4 categories Agriculture and Rural Development, Education, The Big Epidemics, and Community Development as described in the Annual Report 2010 and the expenses are illustrated according to the expenses they have each carried in the year.

* Each member of the Federation is independent and operates within the context of the country where they are registered. The members set up their Financial Statements according to the national laws and specific requirements from their many partners. There are therefore no consolidated accounts for the whole movement, but the Federation has received information as here presented.

AFRICA

ANGOLA: Ajuda de Desenvolvimento de Povo para Povo em Angola, Rua João de Barros n.º 28, CP 345 Luanda.
Tel: +244 923 45 4692
E-mail: adppsede@netangola.com, www.adpp-angola.org

BOTSWANA: Humana People to People Botswana, Plot 823, Extension 11, Gaborone, P/Bag 00149, Suite 245, Gaborone.
Tel: +267 391 36 50, fax: +267 391 36 87,
E-mail: humana@humana.org.bw, www.humana.org

DEMOCRATIC REPUBLIC OF CONGO: HPP-Congo, 31 Rue Katoko Kombe II, Q. Joli Parc, c. Ngaliema, Kinshasa, R.D. Congo.
Tel: +243 81 161 5225
Email: HPP-congo.BS@gbs.cd, www.humana.org

GUINEA-BISSAU: ADPP Guiné-Bissau, Bairro de Cupelum de Baixo Entrada de Djabi, Caixa Postal 420, Bissau, Guiné-Bissau
Tel: +245 66 32359, 68 53323, 59 36064
E-mail: adppartemisa@eguitel.com, asgern@eguitel.com, asgern@humana.org www.adpp-gb.org

MALAWI: DAPP Malawi, Ginnery Corner, BLM Head Office Building, Chichiri, Blantyre, P.O. Box 2732, Blantyre.
Tel/fax: +265 1 878 8922
E-mail: lt@africa-online.net, www.dapp-malawi.org

MOZAMBIQUE: Associação Moçambicana para a Ajuda de Desenvolvimento de Povo para Povo, Centro No Caminho da Vitoria, Rua Berta Caiado, C.P. 489, Machava, Maputo.
Tel: +258 21 750 106, fax +258 21 750 107
E-mail: adpp.mz@adpp.co.mz, www.adpp-mozambique.org

NAMIBIA: DAPP in Namibia
P.O. Box 26660, Windhoek Central, Namibia
Tel/fax: +264 61 258 220
E-mail: dappnam@dapp.namib.com, www.dapp-namibia.org

SOUTH AFRICA: Humana People to People South Africa, 5/11 Richmond Road, Pinetown 3605.
P.O. Box 15339, Ashwood 3605.
Tel: +27 31 701 9280
E-mail: hpp@mweb.co.za, www.hpp-sa.org

ZAMBIA: DAPP in Zambia,
P.O.Box 70505, 10 Luneta Rd., Northrise, Ndola.
Tel/fax: +260 212 64 00 57
E-mail: dappzambia@coppernet.zm, www.dappzambia.org

ZIMBABWE: DAPP in Zimbabwe, Park Estate, Shamva, P.O. Box 4657, Harare.
Tel: +263 912 419 703, 912 400 541
E-mail: dappco@mweb.co.zw, www.dapp-zimbabwe.org

THE AMERICAS

BELIZE: Humana People to People Belize, Monkey River Rd. (Independence), Toledo district, Belize. CA, Mail to: 12 Albert Street West, P.O. Box 1728, Belize City.
Tel: +501 678 9943, fax: +501 520 3984
E-mail: info@humana-belize.org, www.humana-belize.org

BRAZIL: Humana Povo Para Povo Brasil, St SHC/Norte Cl S/N, Quadra 107, Bloco B, Sala 202-C, Asa Norte, Brasília-DF, CEP 70.743-520.
Tel: +55 79 9997 3224
E-mail: info@humanabrasil.org, www.humanabrasil.org

ECUADOR: Humana Pueblo a Pueblo - Ecuador
Coop. Rio Verde, Calle 0 y Calle 4, Cdla. San Pedro 1, El Triunfo - Guayas
Tel: +593 4 390 1223, 08000 7060
E-mail: humanaecuador@humana.org, www.humana-ecuador.org

UNITED STATES OF AMERICA: Planet Aid, Inc., 6730 Santa Barbara Court, Elkridge, Maryland, 21075.
Tel: +1 410 796-1510, fax: + 410 630 7507
E-mail: info@planetaid.org, www.planet-aid.org

ASIA

CHINA: Humana People to People Cooperation Project Office of Yunnan Province, 199 Chuanjin Rd., 650 051 Kunming, Yunnan.
Tel: +86 871 512 4716, fax: +86 871 516 9035
Email: info@HPPchina.org.cn, www.HPPchina.org.cn

INDIA: Humana People to People India, c - 183, Madhuban, Preet Vihar, Delhi -110092, New Delhi.
Tel: +91 11 329 477 34, fax: +91 11 22466386
E-mail: info@humana-india.org, www.humana-india.org

EUROPE

AUSTRIA: HUMANA People to People - Verein für Entwicklungszusammenarbeit, Perfektastrasse 83, 1230 Wien.
Tel: +43 1 869 38 13, fax: +43 1 869 38 13
E-mail: info@humana.at, www.humana.at

BULGARIA: Humana Bulgaria, P.O. Box 50, 9002 Varna.
Tel: +359 526 486 65, fax: +359 526 486 65
E-mail: info@humana-bulgaria.org, www.humana-bulgaria.org

DENMARK: U-landshjælp fra Folk til Folk - Humana People to People, Ndr. Strandvej 95, 3150 Hellebæk. Tel: +45 23 65 67 30
E-mail: info@uff.dk, www.uff.dk

ESTONIA: Ühendus Humana Estonia, Betooni Põik 8, 11415 Tallinn.
Tel: +372 601 2945, fax: +372 601 2955
E-mail: humana@neti.ee, www.humanae.ee

FINLAND: Landsföreningen U-landshjälp från Folk till Folk i Finland r.f., UFF Finland, Järvihaantie 12, 01800 Klaukkala.
Tel: 35 89 276 47 60, fax: 35 89 276 476 10. E-mail: info@uff.fi, www.uff.fi

FRANCE: Humana People to People France, 105 Rue de Lodi, 13006 Marseille. E-mail: info@humanapeopletopeople-france.org

GERMANY: Humana People to People Deutschland e.V., Waldhausstrasse 7, 51069 Köln. Tel: +49 221 500 04 56
E-mail: info@humanapeopletopeople.de, www.humanapeopletopeople.de

HOLLAND: Stichting Humana, Schoudermantel 15, 3981 AE Bunnik, Postbus 65, 3980 CB Bunnik.
Tel. +31 30 657 00 09, fax: +31 30 656 14 55
E-mail: info@humana.nl, www.humana.nl

ITALY: Humana People to People Italia ONLUS, Via Aldo Moro 5, 20010 Pogliano Milanese, (MI).
Tel: +39 2 935 440 00, fax: +39 2 935 429 77
E-mail: info@humanaitalia.org, www.humanaitalia.org

LITHUANIA: Humana People to People Baltic, Kirtimu g. 47, LT-02244 Vilnius. Tel: +370 5 264 10 58, fax: 5 240 49 94
E-mail: info@humana.lt, www.humana.lt

NORWAY: U-landshjelp fra Folk til Folk Norge, Farexveien, Lindeberg, 2016 Frogner. Tel: +47 906 65 986
E-mail: rosa.fried@uffnorge.org, www.uffnorge.org

POLAND: Humana People to People Polska, 00-388 Warszawa, ul. Dobra 4. Tel: +48 22 398 13 08, fax: +48 22 398 78 44
E-mail: humana@humana.org.pl, www.humana.org.pl

PORTUGAL: Associação Humana, Parque Ind. das Carrascas, Estrada Nacional 252 - Km 11,46, 2950 Palmela, Portugal
Tel: +351 21 280 15 87, fax: +351 21 280 15 86
E-mail: info@humana-portugal.org, www.humana-portugal.org.

ROMANIA: Humana People To People Romania SRL, STR. Zizinului NR. 8, BL.39, SC. 1, AP. 5, JUD. BRASOV

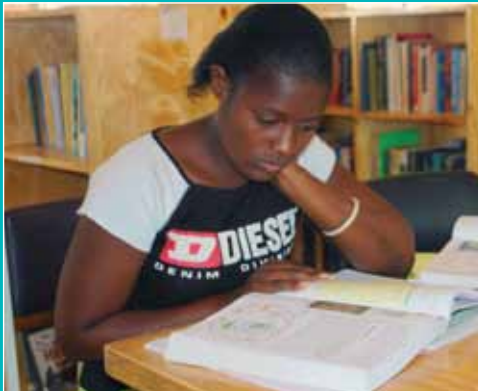
SLOVENIA: Humana People to People Humana D.O.O.
Bizoviška Cesta 411261 LJUBLJANA - DOBRUNJE

AUSTRIA: Humana D.O.O.
Bizoviška Cesta 41
1261 LJUBLJANA - DOBRUNJE
E-mail: info@humana-si.org,

SPAIN: Humana Spain, Polígono Industrial Monguit, c/Tona 1-5, 08480 l'Ametlla del Vallès, Barcelona.
Tel: +34 93 840 21 82, fax: +34 93 840 28 19
E-mail: info@humana-spain.org, www.humana-spain.org

SWEDEN: Biståndsföreningen HUMANA Sverige Industrihuset - Kalmarleden 56, 746 30 Bålsta. Tel: +46 7025 43625
E-mail: humana@humanasverige.se, www.humanasverige.org

UNITED KINGDOM: Planet Aid UK Ltd, 33 Maylan Road, Earlstrees Industrial Estate, Corby, Northants. NN17 4dR.
Tel: +44 1536 400 721, Fax +44 1536 400060
E-mail: bsoc@planetaid-uk.org, www.planetaid-uk.org



International Humana People to People Movement,
International HQ in Zimbabwe:

Murgwi Estate, Shamva
PO Box 6345, Harare

Website: www.humana.org
Email: hqchair@humana.org

Phone: +263 772 420 420